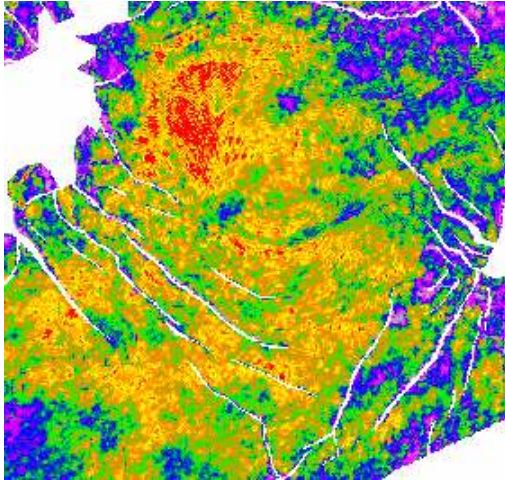
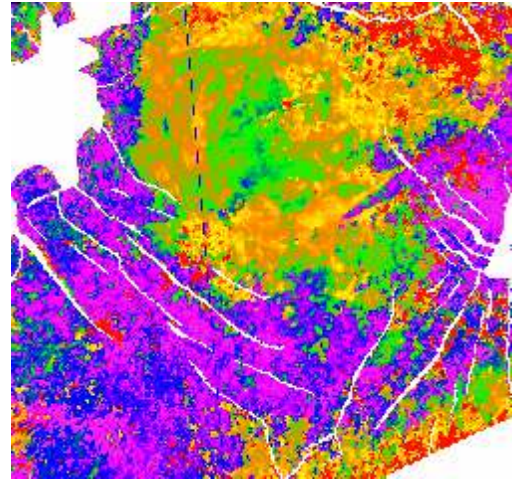


Spectral Decomposition Geo-Texture Highlight Volumes

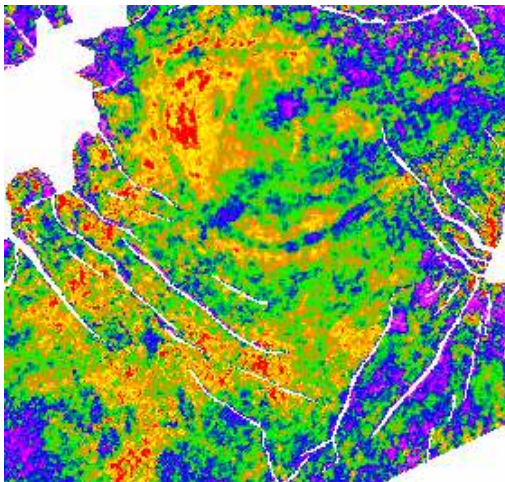
Shallow



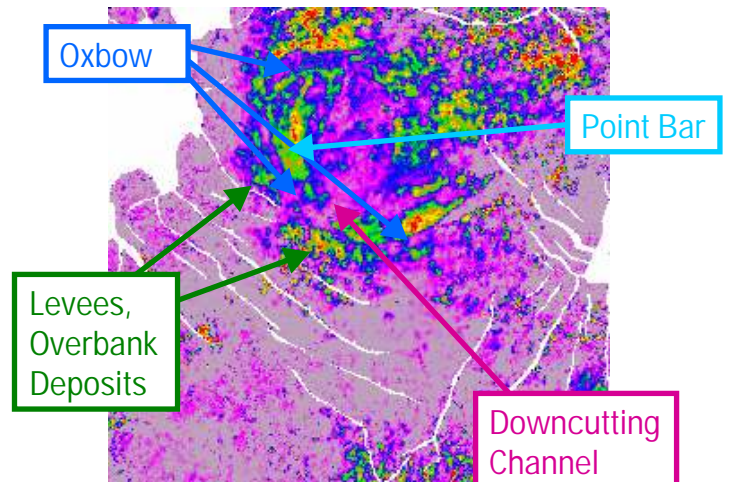
Amplitude



Peak Frequency



Peak Amplitude



Peak Amplitude Above Average

Oxbow

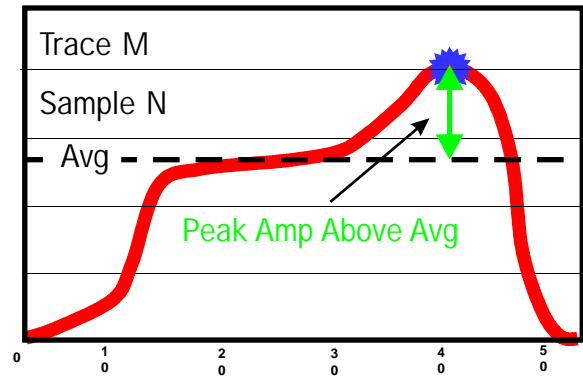
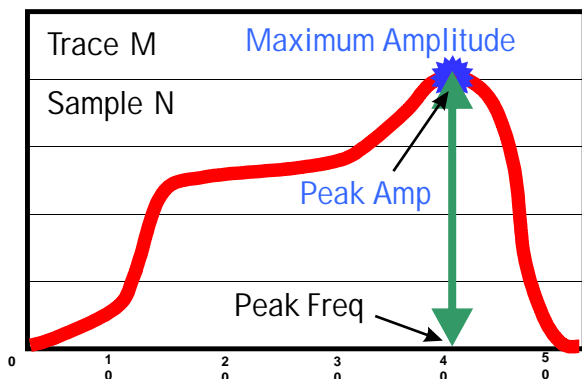
Point Bar

Levees,
Overbank
Deposits

Downcutting
Channel

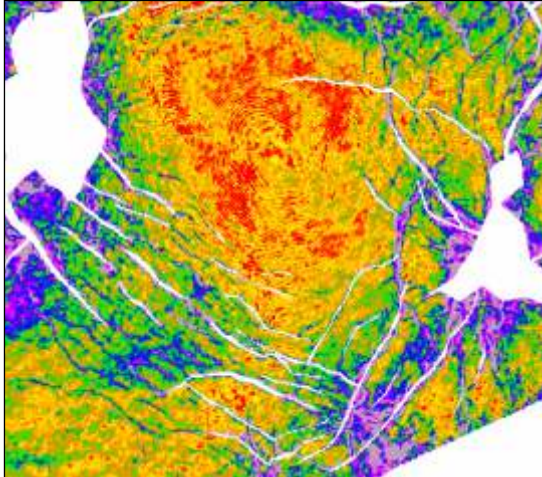
The basic concept for spectral decomposition is to pass a number of single-frequency filters through the data to calculate how much energy there is at each frequency. Normal spec decomp outputs include amplitude or energy volumes at sequential frequency increments over selected bands. In addition to these conventional spec decomp products, Geo-Texture produces three "Highlight" volumes:

- Peak Frequency ● Peak Amplitude ● Peak Amplitude Above Average
- Most useful for imaging true anomalies*

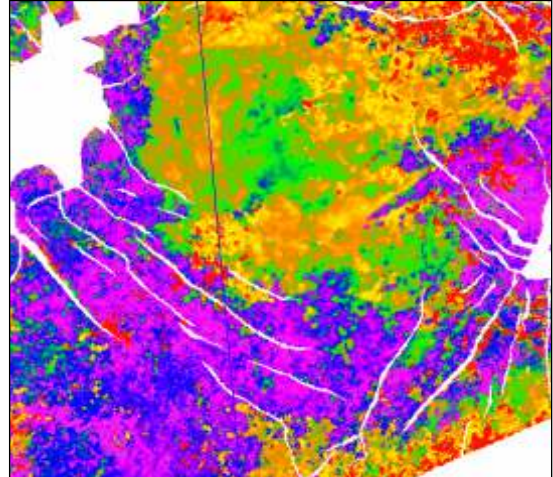


Spectral Decomposition Geo-Texture Highlight Volumes

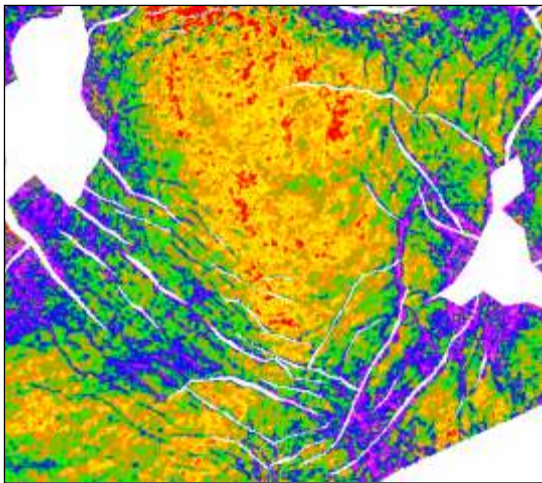
Deep



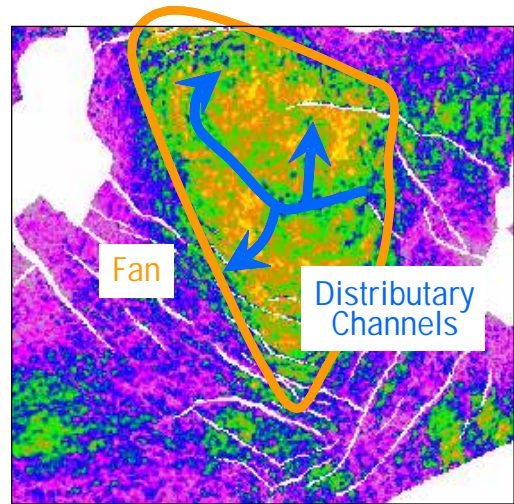
Amplitude



Peak Frequency



Peak Amplitude



Peak Amplitude Above Average

Geo-Texture's Highlight Volumes illuminate key information from all the single-frequency volumes.

Geo-Texture
TECHNOLOGIES

2930 W. Sam Houston Pkwy. N. | Suite 275 | Houston, Texas 77043

Tel: 281-531-7200 | Fax: 281-531-7297

Houston | London | Calgary | Mumbai | Rio de Janeiro | Ciudad del Carmen (Mexico)

www.geo-texture.com