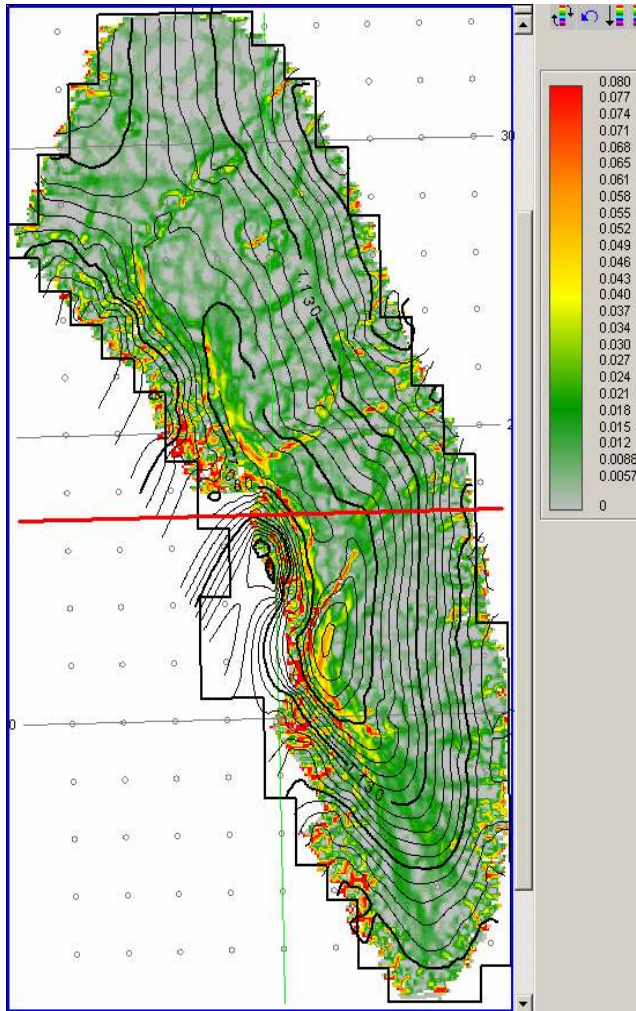
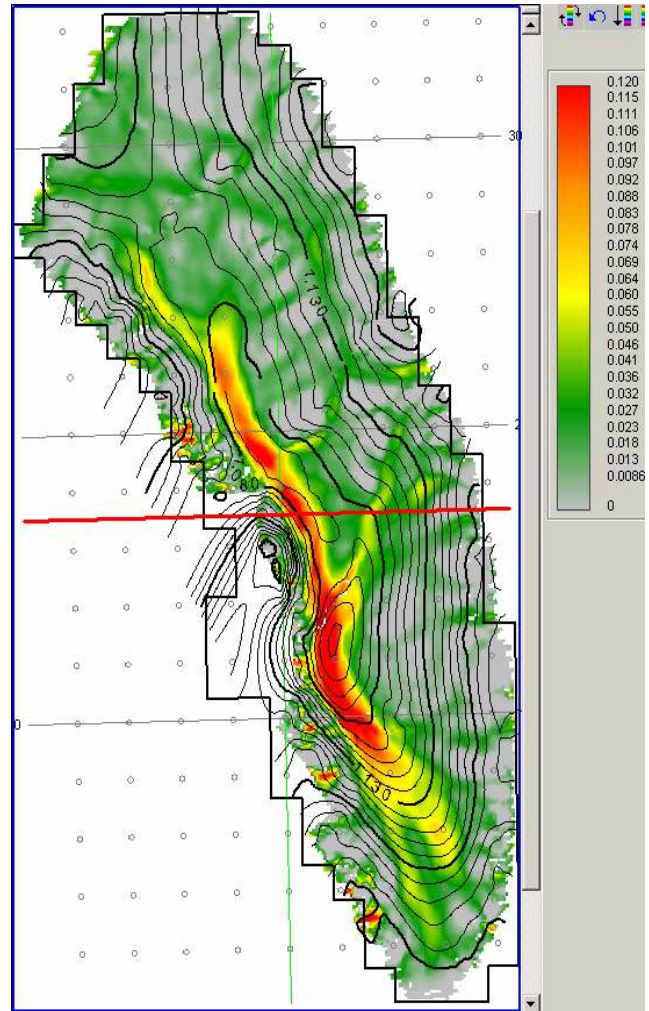


Lateral Resolution Volumes



High Resolution ~300 ft



Long Wavelength ~800 ft

Curvature is a function of lateral resolution. We normally provide two resolutions, which we describe as "high resolution" and "long wavelength."

For small surveys, these are typically sufficient and diagnostic. For most surveys, these usually resolve structures with wavelengths between 250 - 300 ft and 700 - 800 ft.

We have recently developed techniques to show broader structures. We call these Ultra-Long (1500 - 1600 ft) and Sub-Regional (3000 ft).

Geo-Texture
TECHNOLOGIES

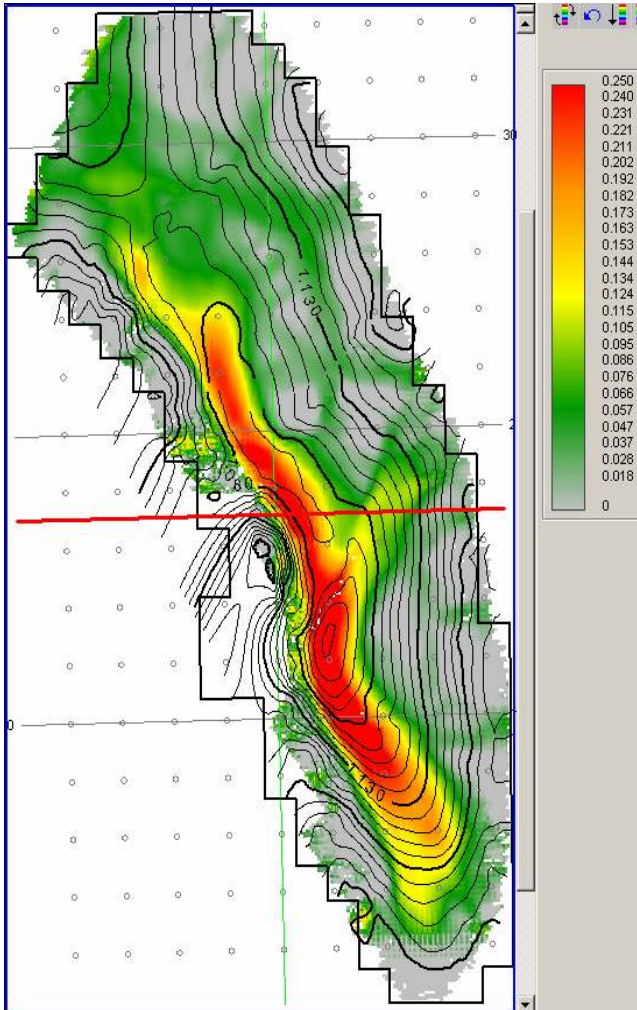
2930 W. Sam Houston Pkwy. N. | Suite 275 | Houston, Texas 77043

Tel: 281-531-7200 | Fax: 281-531-7297

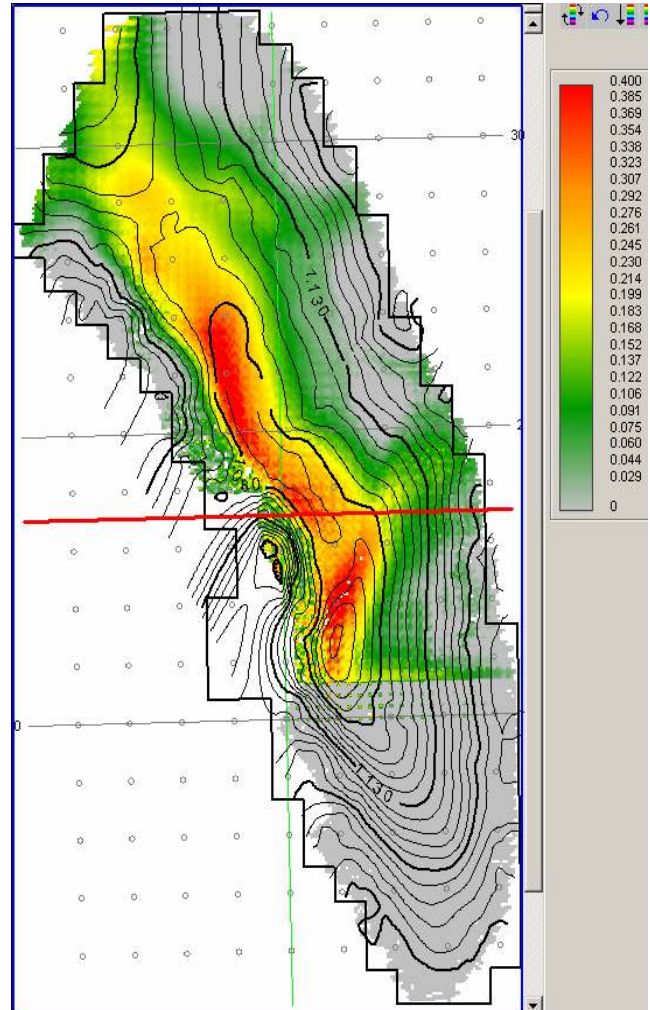
Houston | London | Calgary | Mumbai | Rio de Janeiro | Ciudad del Carmen (Mexico)

www.geo-texture.com

Lateral Resolution Volumes



Ultra-Long Wavelength ~1500 ft



Sub-Regional Wavelength ~3000 ft

Data courtesy of Rocky Mountain Oilfield Testing Center, Denver CO.

Geo-Texture
TECHNOLOGIES

2930 W. Sam Houston Pkwy. N. | Suite 275 | Houston, Texas 77043

Tel: 281-531-7200 | Fax: 281-531-7297

Houston | London | Calgary | Mumbai | Rio de Janeiro | Ciudad del Carmen (Mexico)

www.geo-texture.com