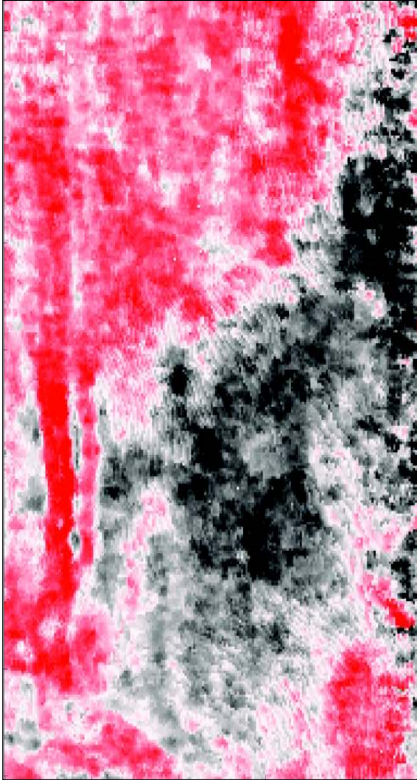
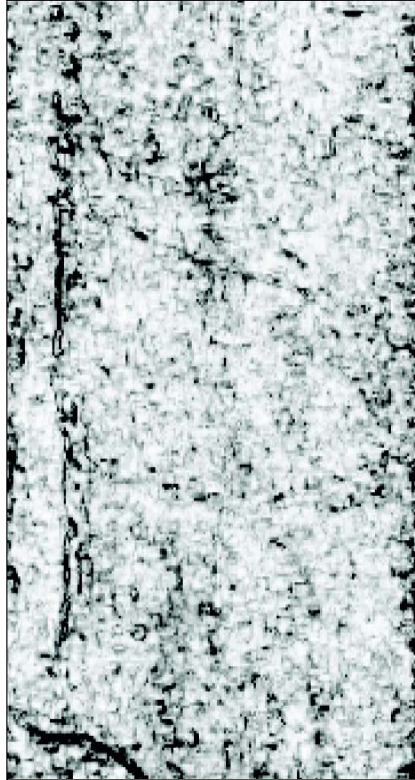


# 3D Volume-Based Curvature Analysis

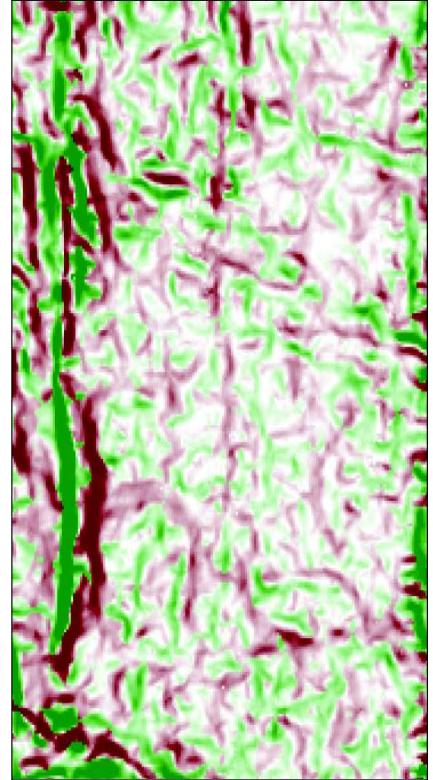
**Conventional**



**Coherence**



**Curvature Analysis**



*Curvature (texture) analysis provides the explorationist with a new tool for the illumination of subtle features that were previously undetectable. Texture analysis is an economical technique that can be applied to any 3D post-stack data volume.*

*Optimal interpretation of texture data (developed by our chief geoscientist Charles "Chuck" Blumentritt) is crucial to achieving the maximum drilling-risk-reduction benefits derived from curvature analysis.*

*Geo-Texture has performed curvature analysis on data volumes from the following regions:*

- North America
- South America
- Mid-East
- China
- India

*With over 300 projects completed to date, no other company has more experience in successfully exploiting this important new technology.*

**Introducing EnerComp<sup>SM</sup>, Updated Eigen-Value Precise Coherency**

**Geo-Texture**  
TECHNOLOGIES

2930 W. Sam Houston Pkwy. N. | Suite 275 | Houston, Texas 77043  
Tel: 281-531-7200 | Fax: 281-531-7297

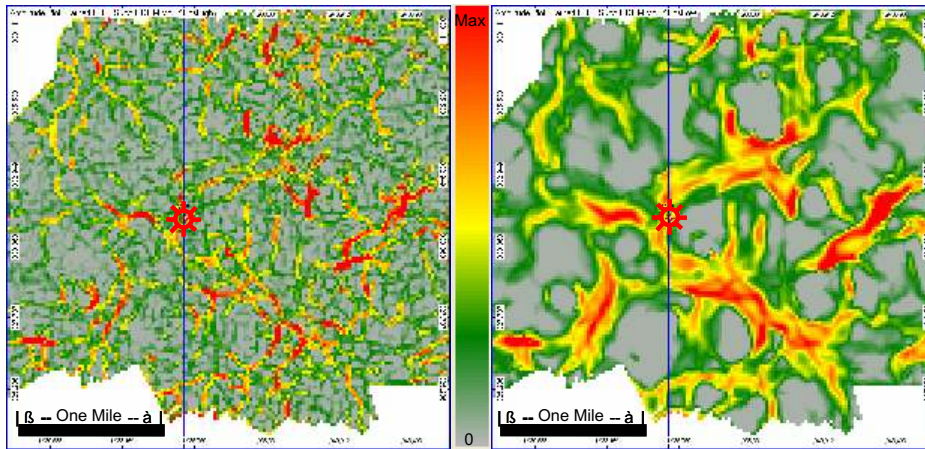
Houston | London | Calgary | Mumbai | Rio de Janeiro | Ciudad del Carmen (Mexico)

[www.geo-texture.com](http://www.geo-texture.com)

# 3D Fracture Illumination

## Most Positive Curvature

Barnett Shale



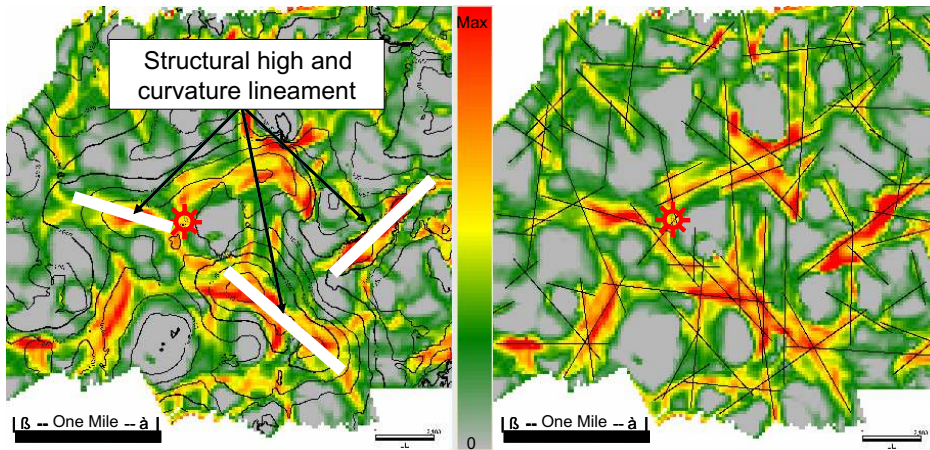
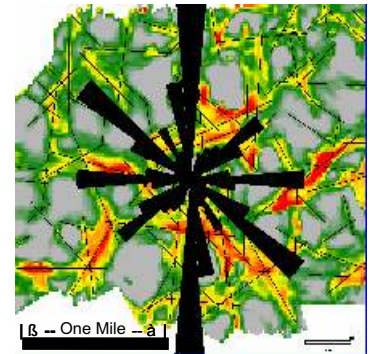
High Resolution

L = 300 Ft

Long Wavelength

L = 800 Ft

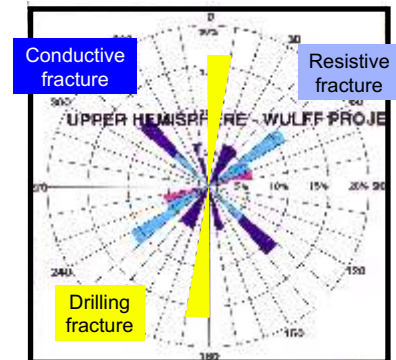
## Interpreted Lineaments



Barnett Time Structure

Interpreted Lineaments

## FMI Interpretation



**First** *Geo-Texture was the first company to successfully commercialize volume-based curvature analysis.*

**Most** *No company has more experience in volume-based curvature analysis, with over 300 curvature processing projects to date, worldwide.*

**Best** *Geo-Texture's record for turnaround speed and processing results is unmatched by any competitor.*

**Geo-Texture**  
TECHNOLOGIES

2930 W. Sam Houston Pkwy. N. | Suite 275 | Houston, Texas 77043

Tel: 281-531-7200 | Fax: 281-531-7297

Houston | London | Calgary | Mumbai | Rio de Janeiro | Ciudad del Carmen (Mexico)

[www.geo-texture.com](http://www.geo-texture.com)